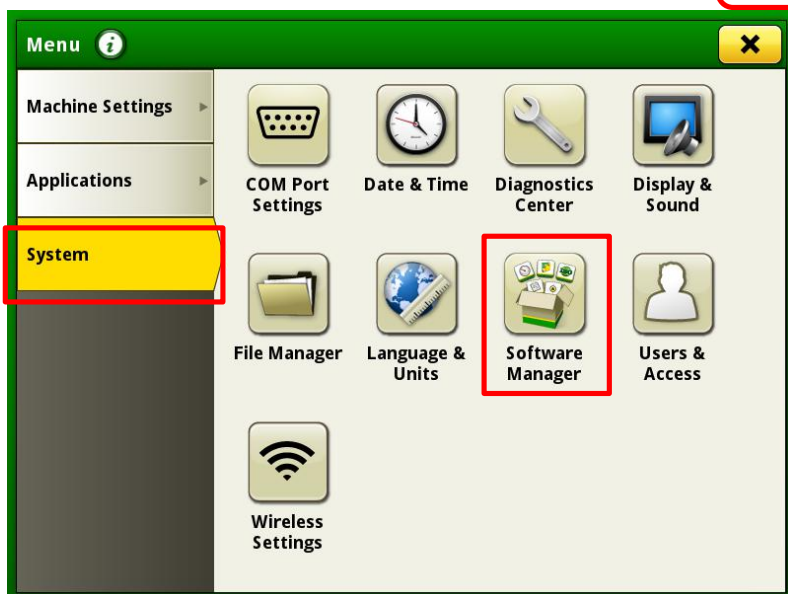


BE Informed!

MANDATORY RECEIVER UPDATE INSTRUCTIONS USING OVER THE AIR INSTALLATION

*Before beginning, please make sure you have 45 minutes to an hour of uninterrupted time for the update to complete.

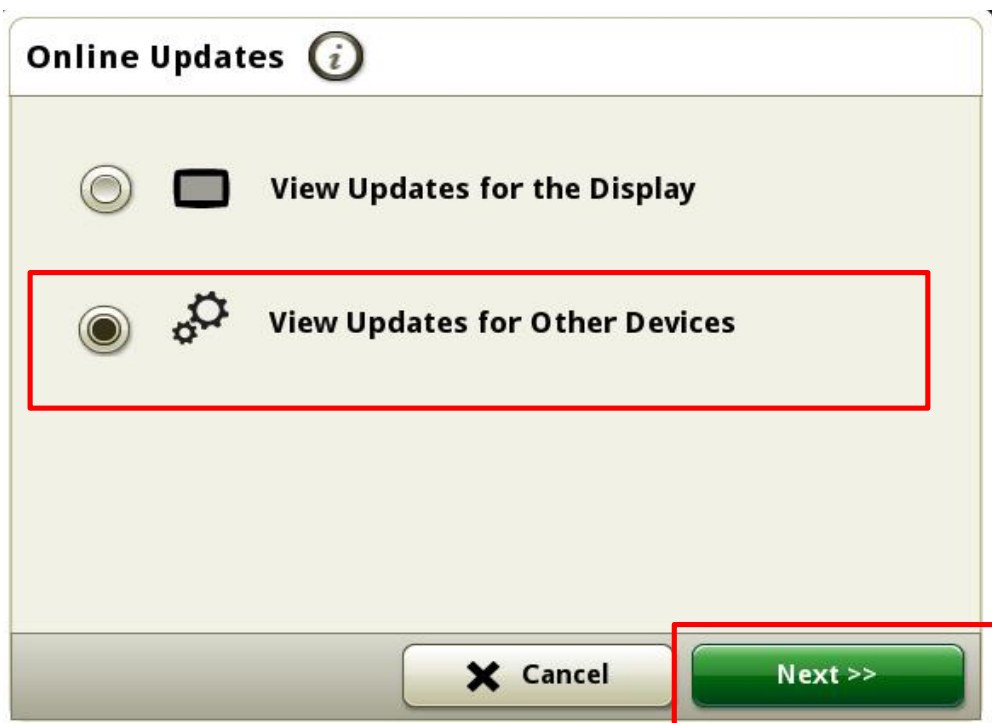
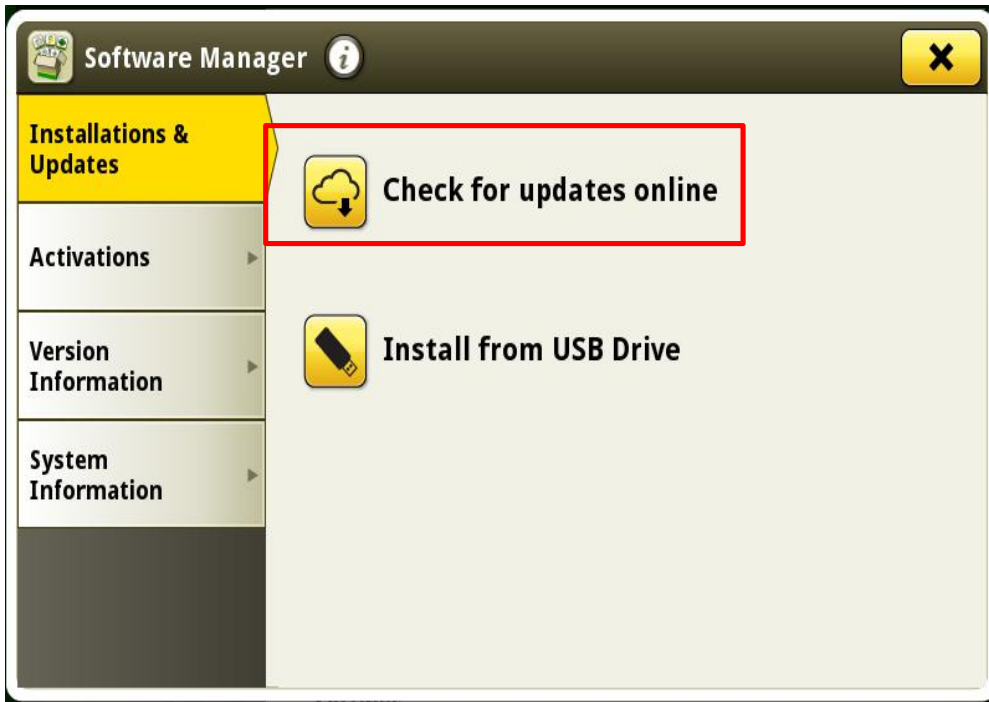
- From the startup screen, select the **Menu** button in the bottom right hand corner, then select **System** on the left side of the screen.
- From the menu screen, select **Software Manager**.



IMPORTANT RECEIVER UPDATE INSTRUCTIONS

continued

- From here, select **“Check for updates online”**.
- From the next window, select **“View updates for Other Devices”** and press **“Next”**.



RECEIVER UPDATE INSTRUCTIONS *continued*

- After it searches for the software, the next page will show the new version of software to be installed.
- Select the version to be installed, then press **Install**.
(4.40N for 6000 receivers and 2.80S for 3000 Receivers)

